

# Peasedown St John

## Parish Council



# NEWSLETTER

'Building our Community Together'



February 2009

Issue 63

## Shall we all cheer up?

I imagine that I am not the only person in Peasedown St John who is becoming fed up with the doom and gloom merchants who appear and speak regularly on the television and radio. Whilst it is important that we are given the news, so often now we are subjected to someone's opinion, usually, it would seem, based on the premise that bad news sells more papers or gets greater audiences.

As far as possible, the Parish Council spends its time looking in a positive way to the future of our community and although with the knowledge that "money is tight" and therefore we need to be extra prudent, we do not allow ourselves to drift into despondency simply because that mood is the flavour of the month.

Perhaps the doom and gloom merchants should visit us and see what is happening in this village. They should talk about the plans that the council, organisations and families have for this coming year and in the years to come.

All of these spell out a positive future and although times may be hard now and for the next few months, we shall all emerge from it

***continued on back page***

The Parish Council's Website can be found at [www.peasedownstjohnparishcouncil.gov.uk](http://www.peasedownstjohnparishcouncil.gov.uk) The website contains agendas for meetings together with Annual Reports and the Parish Design Statement.

To e-mail the Council please use [clerk@peasedownstjohnparishcouncil.gov.uk](mailto:clerk@peasedownstjohnparishcouncil.gov.uk)

# Success of young people from Peasedown St John Youth Centre

As usual young from Peasedown St John Youth Centre have been very busy taking part in a wide range of activities both in the centre and out.

Young people have raised £18 for the Tommy's Charity by holding a biscuit sale at the centre. The money will be used to support medical research into the causes of premature and stillbirth.

6 young men from the centre passed their level 2 cycling awards and as a reward for their achievement will be visiting Motion Skate Park in the coming months.

As part of the ongoing programme 15 young people have successfully completed their Bronze arts award. They have really enjoyed the sessions and have worked hard to complete their portfolios. The Arts Award assessor called their achievements some of the strongest work seen to date. *“Very impressive. Excellent. Leadership opportunities opened up to all the young people are very positive and educational.”* One young person said that she now recognised that the theatre was not just for posh people.

A group of young men from the centre have been working with young performers from the Egg Theatre and the group have been busy learning new DJ skills as well as writing their own lyrics.



***continued on page 15***

# Parish Plan Update

In the period since the December newsletter two main administrative activities have continued. The really time consuming one has been to transfer all the results from the paper questionnaires onto a manageable database; a mammoth exercise that is now completed.

This required the keying-in of everything that residents wrote (yes, bad grammar and all included! We were keen not to influence results by introducing any editing or assumptions by the data enterers).



We now know that 746 forms needed to be keyed-in this way, a 31 per cent collection result from residents which is most commendable and largely thanks to the efforts of our volunteer helpers and shopkeepers who co-operated in the exercise.

In addition 47 residents took advantage of the facility that was made available to directly enter results onto the database themselves, and these have been added.

Following completed assembly of the database, processing is now in hand to start producing meaningful results, which requires computer output of a blend of totals and percentages from the arithmetical results, taken together with an analysis of the plentiful (and very varied!) individual written comments made about each question from our respondents.

On present plans the Committee are hopeful that a presentation of procedural progress can be made as part of the Annual Parish

***continued on page 4***

# Rainbow Guides

We are members of Girlguiding UK and enjoy a balanced programme of fun, games, crafts and learning under the Headings of “Live, Laugh, Love and Learn”.

We meet Tuesdays from 4.45 to 5.45 at Beacon Hall, each meeting is different and we are looking for some adult leaders to help us.



Girlguiding UK is a girls only organisation and Rainbows are aged between 5 and 7 years old. If you can spare a couple of hours a week and would like to join us please call Judy on 01761 434830 who can give you more information.

**Judy Collins**  
District Commissioner

---

***continued from page 3***

Meeting in March 2009, with a separate event revealing more detailed results, and by then likely Action Plans to be held in May 2009.

The Parish Plan exercise has now been under way for over three years, and the composition of the Steering Group has inevitably changed during that time. If any of the earlier members who no longer regularly attend would like to do so again, please just send an e-mail to our Secretary on: [prp@talk21.com](mailto:prp@talk21.com) and you will be reinstated on the Distribution List to receive Agendas and Notes of regular Steering Group meetings.

**Peter Provest**  
Secretary

# Peasedown St John Cricket Club

## Fancy a Game of Cricket?

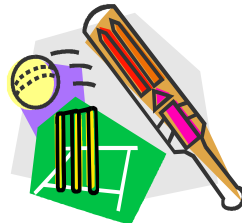
You are most welcome to visit our Red Post Ground and experience the Sporting and Social sides of our lovely game.

Our indoor practice nets start at Writhlington School at 6pm on 1st March for adults and children for under 11s to under 15s. Outdoor practice will start on the ground on 8th April.

We run 2 sides on a Saturday in the Somerset League and one on a Sunday in the North Somerset League so we can give you a game at a level to suit your ability.

**So go on - have a GO!**

**Come along and give it a try**



For further information contact

Amanda Baldwin      Everton Griffith

01761 433249

01761 433161

Ken Willcox

07976790194

07841991201

01761 432447

---

## Peasedown St John Christadelphians, Huddox Hill

***Tuesday 3rd February 7.45pm - Bible Discussion: "Our World - More Than Blind Chance"***

The 200th Anniversary of Charles Darwin's birth is being remembered this year with the BBC prominent in presenting a series of programmes on his life history and his theory of natural selection. In conjunction with the talk on Tuesday 3rd February, we are giving away a DVD on The Bible and Science entitled "Facts and Theories", which compares the currently accepted theories on the beginnings of the universe and the origin of life

***continued on page 6***

---

## Pick up a bargain at the NCT Table Top Sale in Peasedown St John

The North East Somerset branch of the NCT is organising another of its ever popular table top sales in the Beacon Hall in Peasedown St John on Sunday 15th February from 2.30pm to 4pm.

A great opportunity to pick up a real bargain, the sale will feature good quality baby, children's and maternity clothes, toys and books, and baby equipment such as baby baths, cots, highchairs, pushchairs and prams.

The event will also help to raise much needed funds for the NCT, the UK's leading parenthood charity, with money going towards campaigns to improve services and provide support for new parents.



If you are interested in selling items at the table top sale, you will need to register in advance by calling 0844 2436173 or by emailing [nesomersetnct@hotmail.co.uk](mailto:nesomersetnct@hotmail.co.uk). The fee per table is £8.00.

For more information, visit [www.nct.org.uk/branches/nesomerset](http://www.nct.org.uk/branches/nesomerset),

---

***continued from page 5***

with what the Bible tells us. It asks the question: "Is the Bible really in conflict with science?"

To obtain a copy of the DVD call in at the hall when we are there or send us your address to either the "Contact us" tab on our web site <[www.psjcc.org.uk](http://www.psjcc.org.uk)> or to The Christadelphians, Huddox Hill, Peasedown St John, BA2 8AE.

***continued on page 7***

# Help Needed!

The Scouts have been in the village for over 100 years and are still finding new ways to have fun. The Peasedown St John Scouts, Cubs and Beavers are a real part of our community.

The Scouts, Cubs and Beaver colonies provide a happy and safe environment for children, ranging from 6 to 14 years of age.

Members take part in many different activities such as swimming, exploring, sports, outdoor activities and camping. When a task has been completed the member will earn a badge which is worn on their uniform.



The Peasedown St John colony is asking for local help. The group are in need of new camping equipment - meal tents for use at events and camps. The group are fundraising to purchase the tents but if any local businesses or residents would like to assist the Scouting group with funding by donation, please contact [Karl Kilburn](mailto:Karl.Kilburn@peasedownscouts.org) on 01761 435611.

---

*continued from page 6*

***Sunday 15th February 10.30 Praise Service - A special service of Singing and Praise to which you all are invited.***

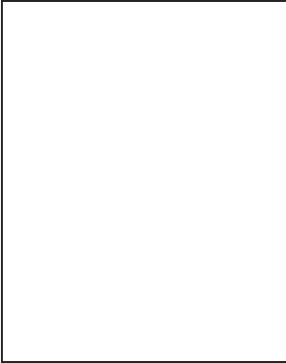
***Tuesday 3rd March 7.45pm - Bible Discussion; "Adam and a Dreadful Mistake"***

Find out how the Gospel is taught in the first few chapters of Genesis at the very beginning of the Bible!

# Members of Peasedown St John Parish Council



John Bolwell



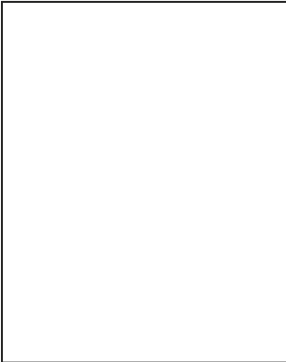
Robert Butt (Chair)



Marion Button



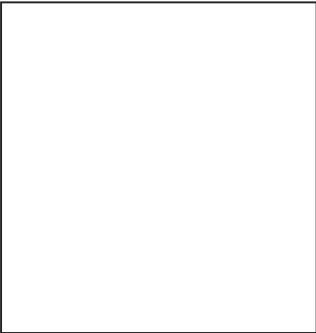
Aubrey Chegwyn



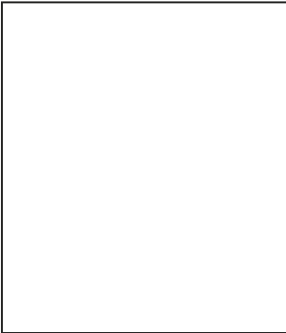
Francis Day



Paddy Dixon



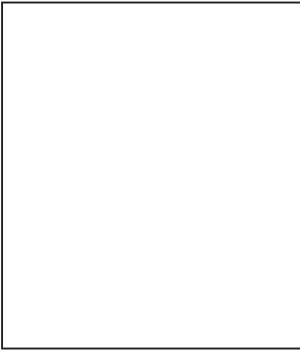
Mike Gregory



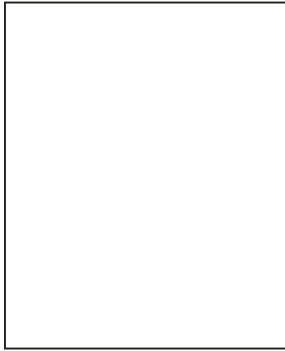
John Goring



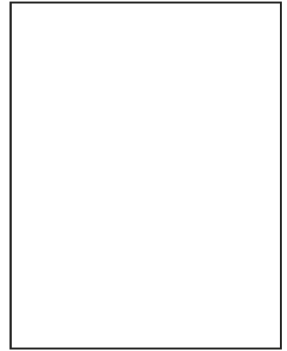
Mary Kennedy



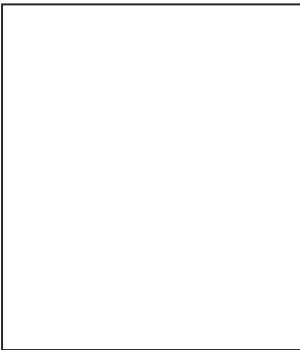
Guy Matthews



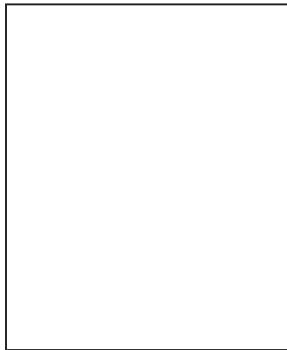
Colin Rich



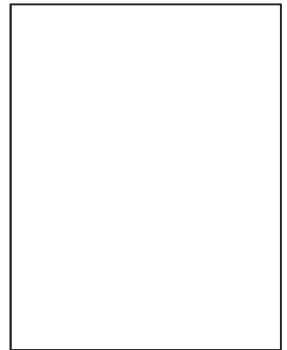
Jonathan Rich  
(Vice Chair)



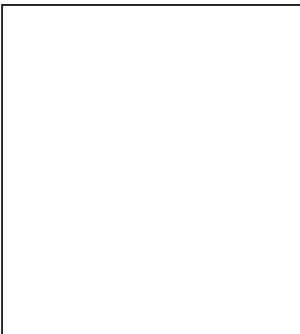
Ruth Rich



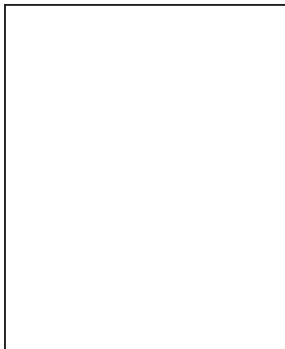
Alan Spiller



Kathy Thomas



Neil Hopkins



Sam Hopkins

See page 15 for  
details of our Clerk  
and new Assistant  
Clerk

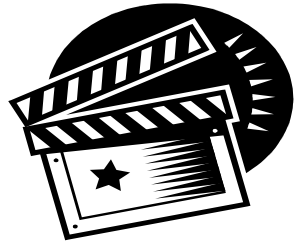
## Royal visit with a difference puts Bath on the screen again

**B**ath & North East Somerset Council has announced that a Royal visit with a difference was staged in the district from 19th January.

The Council's Film Office, transport and parks teams have been working with Blast! Films who are responsible for a new drama-documentary about the Queen's life which is expected to air on Channel 4 this autumn.

A number of period houses in and around the local area were used as locations for this production, 'The Queen'. They also filmed in a property adjacent to Royal Crescent.

One of the most dramatic incidents in the production was filmed in Royal Avenue in Royal Victoria Park. The Avenue was used as the backdrop for the reconstruction of the attempted kidnap of Princess Anne, which happened in the 1970s in the Mall, Hyde Park.



Jenni Wagstaffe, Film Commissioner, Bath & North East Somerset Council's Film Office said: "It is very good news that this district is continuing to build on its reputation of being film-friendly. Locations have doubled up for London on other occasions in recent months, and this is a credit to everyone who helps to make this area such an attractive proposition to production teams. Filming brings in both direct and indirect income to the local economy, and it is a great way of raising the profile of the district."

# Passport to Health

Sports & Active Leisure's Active Lifestyles Co-ordinator, Jessica Brodrick, is responsible for running the Authority's Health Lifestyles Scheme, Passport to Health, which allows healthcare professionals to refer inactive individuals with a range of other health-related risk factors to a supervised activity and lifestyle change programme.

The scheme is currently operating from our four leisure sites in Bath, Midsomer Norton, Writhlington and Keynsham. The programme incorporates both exercise and education elements, designed to enable individuals to take ownership of their own health by encouraging them to participate in regular physical activity, healthy eating and support them in making healthier lifestyle choices.

The education component is modelled on the Expert Patient Programme and is the first time an Exercise Referral Scheme is delivering motivational lifestyle sessions, alongside physical activity.

Passport to Health will contribute to B&NES Primary Care Trust, B&NES' Sports and Active Leisure and the Government's Choosing Health Targets to

- Reduce the number of adults aged 15-75 with a BMI over 30
- Reduce the death rate from coronary heart disease and related diseases in people under 75 by at least 2 fifths by 2010
- 50% of the population regularly physically active by 2030 (30 minutes x 5 times a week)

For further information please contact Jess Brodrick on 01225

# Neighbourhood Learning in Local Communities

*Develop your skills and knowledge to help get you into the job you want*

**Supporting people to get back to work - the choice is yours**

## What Can You Do?

### Working in Early Years

We offer an introductory course to working in early years which provides the first steps to help you back into studying and can lead on to a childcare course at a local college.

### IT Skills for Jobs

We offer a short beginners course on how to use computers for basic tasks such as word-processing, desktop publishing, using the internet and sending emails. This course can lead into accredited courses at your local college.

### Working in School

Working in schools may be exactly what you need - a job with hours that work around your own childcare needs. We offer an introductory course which looks at what opportunities are available and how to go about it.

### Confidence skills

This course is designed to help build your confidence to enable you to get into (or back into) work. By the end of the course you will have the tools to increase your confidence and self esteem, cope with stress and anxiety and how to manage in an interview and work situation.

## Need Some Help Deciding?

### Writing a Curriculum Vitae

Would you like to learn how to write a CV? This introductory workshop will give you all the guidance and skills to plan, prepare and produce a CV.

## Applying for Jobs

Do application forms put you off applying for the job that you want? This is a short introductory course to show you how to complete an application form, identify your skills and make a successful application for the job you want.

## Interview Skills

This introductory course provides you with the skills, confidence and assertiveness required to be able to confidently attend an interview.

## Food Hygiene

This course would be a good introduction if you wanted to progress onto an accredited Food Hygiene Course through the college or other training programme.

## Introduction to Retail

We offer an introductory course to working in retail that covers all the basic skills and knowledge required to apply for jobs successfully in this field of work.

These courses can be undertaken in Bath, Keynsham, Midsomer Norton/Radstock or Chew Valley, either in the morning, afternoon, evening, weekdays or weekends. Other venues are also available.

For more information and to chat about Back to Work courses please call

**Community Learning Service**  
**01225 396450**

Lynne Atherton  
Community Learning Development Worker  
The Hollies  
High Street  
Midsomer Norton  
BA3 2DP

## Peasedown St John Cub Pack

The Cub Scout Pack is now open to both boys and girls. Currently we have 16 boys in the pack.

Over the last few months we have been busy with creative challenges and playing games.

The creative challenges included marzipan fruits, Christmas candles and finally the Christmas party sketches, some of which adopted an interesting approach to the pantomime stories. We have got a lot of games equipment bought with Sainsbury's vouchers and we have been playing a lot of games with this, such as hockey and netball.



Outside Monday nights we have had a wide range of activities including the village tree-planting event, a visit to Paulton's Park to see Santa and go on all the rides. We had a winter climbing wall event, and took part in the District Christmas Handicraft Competition. We did very well with eleven prizes - four firsts, three seconds and four third places.

We are now thinking ahead to our Cub camp during the Easter holidays, as well as a few more adventurous activities to liven up the weekends.

Congratulations to Adam who achieved his Chief Scout Silver Award.

**Andrew Wynd**

Cub Scout Leader 07917 124910

---

**Articles for publication in the April issue of the newsletter should be with the Editor by Thursday 19th March**

The Parish Council's Website can be found at [www.peasedownstjohnparishcouncil.gov.uk](http://www.peasedownstjohnparishcouncil.gov.uk) The website contains agendas for meetings together with Annual Reports and the Parish Design Statement.

To e-mail the Council please use [clerk@peasedownstjohnparishcouncil.gov.uk](mailto:clerk@peasedownstjohnparishcouncil.gov.uk)

***continued from page 2***

As part of the Arts Award we went along to the Egg Urban Hype night to pick up a few tips and as a celebration of the young peoples' work a concert was held at the centre which saw a large crown watch two groups of dancers and the young men, who are now known as DFE perform.

The concert was a real success and the groups are back at the centre on Tuesday evenings writing more lyrics and learning more dances ready to take to the stage again. The young men designed and printed their own T-shirts for the evening.

Carrying on with the arts young people from the centre have also been to watch 'Holes' at the Egg Theatre and recently went to see 'Blood Brothers' at the Bristol Hippodrome.

As part of the Christmas programme at the centre the young people enjoyed a shopping trip to Cardiff and a trip to see 'Fame' at the Bristol Hippodrome has been booked for March.

For further information about Peasedown St John Youth Centre please contact Bridie Marshall on 01761 432294 or [bridie\\_marshall@bathnes.gov.uk](mailto:bridie_marshall@bathnes.gov.uk).



**Chris Hartley**  
(Clerk)



**Angela Wilson**  
(Assistant Clerk)

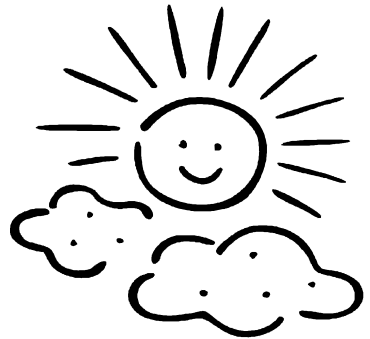
---

***continued from front page***

as we always have in the past. Perhaps it would be a lesson for some of the commentators to consider the lot of many millions of people in Africa and Asia, where for the majority, things are always very bad and we should count ourselves lucky that we have and take for granted a standard of living far beyond many people's imagination.

So let us all cheer up and look forward to the future. The grey skies will soon disappear, the sun will be warm again and things will improve.

Let's all be positive and remember Roosevelt's famous call at his inauguration in 1933, *'all we need to fear is fear itself'* and echoed by President Obama to Americans to *'pick themselves up, dust themselves down and start rebuilding.'*



I hope you all and the village have a good and happy year.

**Robert Butt**  
**Chairman of the Council**